

MISSOURI PRESERVATION

Preserving Place And Community For Future Generations

2020 ANNUAL REPORT PRESERVATION NEWS

MISSOURI PRESERVATION STAFF

Riley Price, Interim-Director
(Sappington)

2020 BOARD OF DIRECTORS

David Mastin, President (St. Louis)
Christina Clagett, Vice Pres. (St. Louis)
Ann Holtshouser, Treasurer (St. Louis)
Lauren Manning, Secretary (St. Joseph)
Ruth Keenoy, At-Large (St. Louis)
Paden Chambers (Springfield)
Carolee Hazlet (Moberly)
Maureen McMillan (St. Louis)
Craig Milde (Jackson)
Rachel Consolloy (Kansas City)
Ross Rotherham (St. Louis)
Marion Smith (St. Louis)
Jill Sullivan (Joplin)
Andy Trivers (St. Louis)
Sheila Vemmer (Kansas City)
Bradley Wolf (Kansas City)
Patrick Wolf (St. Louis)

EX-OFFICIO BOARD MEMBERS

Lisa Brisco (Kansas City)
Toni Prawl (Jefferson City)
David Richardson (St. Louis)
Gayla Roten (Branson)
Andrew Weil (St. Louis)
Eric Youngberg (Kansas City)

ADVISORY BOARD MEMBERS

Jeff Brambila (St. Louis)
Jeanine Cook (St. Louis)
Gerry Friedman (Labadie)
Carol Grove (Columbia)
Erle Lionberger (St. Louis)
Randy Maness (Doniphan)
Elizabeth Rosin (Kansas City)
Deb Sheals (Columbia)
H. Meade Summers, Jr. (St. Louis)

DEAR FRIENDS:

2020 wasn't easy, but we made it through thanks to the support of friends like you.

With your assistance we were able to do things like:

- Help individuals locate resources for their research and preservation projects;
- Add additional resources to our website www.preservemo.org;
- Educate Missourians on the Historic Tax Credit process and the benefits of heritage tourism;
- Highlight 11 endangered historic places in Missouri via our Places in Peril list and share with you the new Places in Peril Where are They Now map, an interactive map locating past-listed places with information on their current state and what assistance they might still need;
- and recognize 13 outstanding people and projects in preservation from across the Show-Me state with our annual Honor Awards.

Although we continue to traverse uncharted waters, we are working harder than ever to ensure Missouri's historic resources will remain for generations to come. Thank you for being a part of the dedicated preservation community in Missouri.

Sincerely,

Missouri's Historic
PLACES IN PERIL
2020



THE FORMER STONNER MEAT MARKET
Chamois | Osage County



MISSOURI STATE PENITENTIARY WALLS
Jefferson City | Cole County



FORMER ST. AUGUSTINE CATHOLIC CHURCH "PROJECT AUGUSTINE"
St. Louis City



FORMER KARPELES MANUSCRIPT LIBRARY
St. Louis City



MOBERLY JUNIOR HIGH SCHOOL
Moberly | Randolph County



THE OLIVIA APARTMENTS
Joplin | Jasper County

2020 Places in Peril Sponsors

STRATA Architecture + Preservation

Stark Wilson Duncan Architects, Inc. — RubinBrown — R.G. Ross Construction Co. Inc.



HISTORIC HOMES OF AVA

Ava | Douglas County



HISTORIC RESOURCES OF ST. CHARLES

St. Charles | St. Charles County



ROLLA DIVISION OF THE BUREAU OF MINES HEADQUARTERS

Rolla | Phelps County



OLD PHILLIPS 66 GAS STATION

Greenfield | Dade County



BAY MERCANTILE COMPANY

Village of Bay (Hermann) | Gasconade County

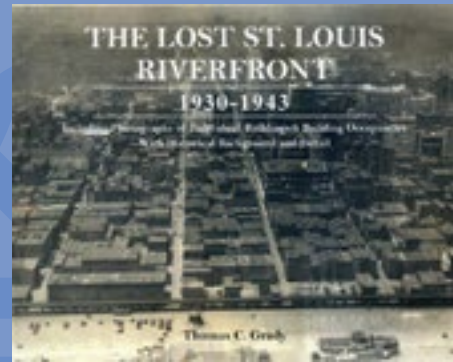
PLACES IN PERIL UPDATES

Keep up-to-date on the status of all past-listed Places in Peril with our new “Where Are They Now?” map. Instead of re-listing places or creating a “Watched” list, this new map will allow you to view the current status of each Place in Peril, find out what has been saved, and what you can do to help those still endangered.

2020 HONOR AWARD RECIPIENTS



The Elizabeth & George Rozier Award
TIM CONLEY
Ste. Genevieve | Ste. Genevieve County



Osmund Overby Award
"THE LOST ST. LOUIS RIVERFRONT 1930-1945"
THOMAS GRADY
Kansas City, Jackson County



McReynolds Award
THE SILVERSMITHS HOUSE — ANTOINE ONEILLE HOUSE RESTORATION
Ste. Genevieve, Ste. Genevieve County



McReynolds Award
KANSAS CITY AFRICAN AMERICAN HERITAGE TRAIL
Kansas City, Jackson County



McReynolds Award
MISSOURI BOTANICAL GARDEN STONE WALL RESTORATION
St. Louis City

Preserve Missouri Awards

THE LOUIS LANGE PUBLISHING COMPANY
St. Louis City
WOODWARD LOFTS
St. Louis City
MRS. JOHN ISBELL HOUSE
Washington, Franklin County
REVITALIZATION OF IVERS SQUARE: OLD
TOWN CAPE INC.
Cape Girardeau, Cape Girardeau County

J. RIEGER & CO.
Kansas City, Jackson County
THE BUCKLEY
Excelsior Springs, Clay County
GOTHAM APARTMENTS REHABILITATION
Kansas City, Jackson County
LINCOLN COUNTY COURTHOUSE COLUMN
RESTORATION
Troy, Lincoln County

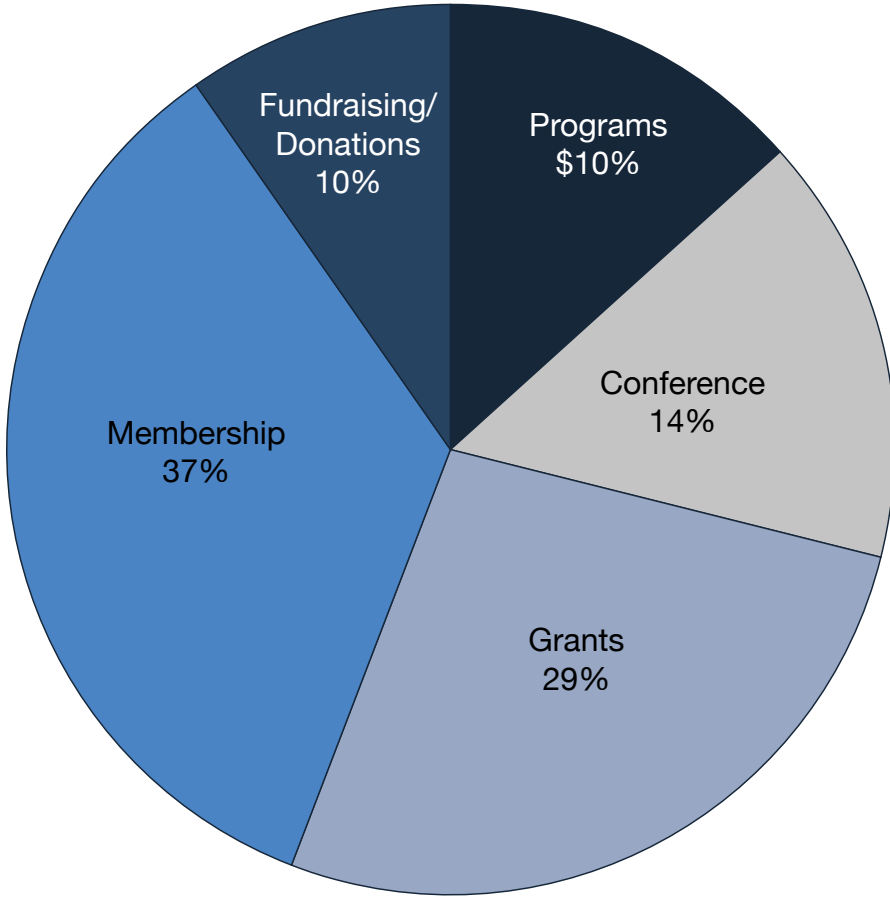


2020 HONOR AWARD SPONORS

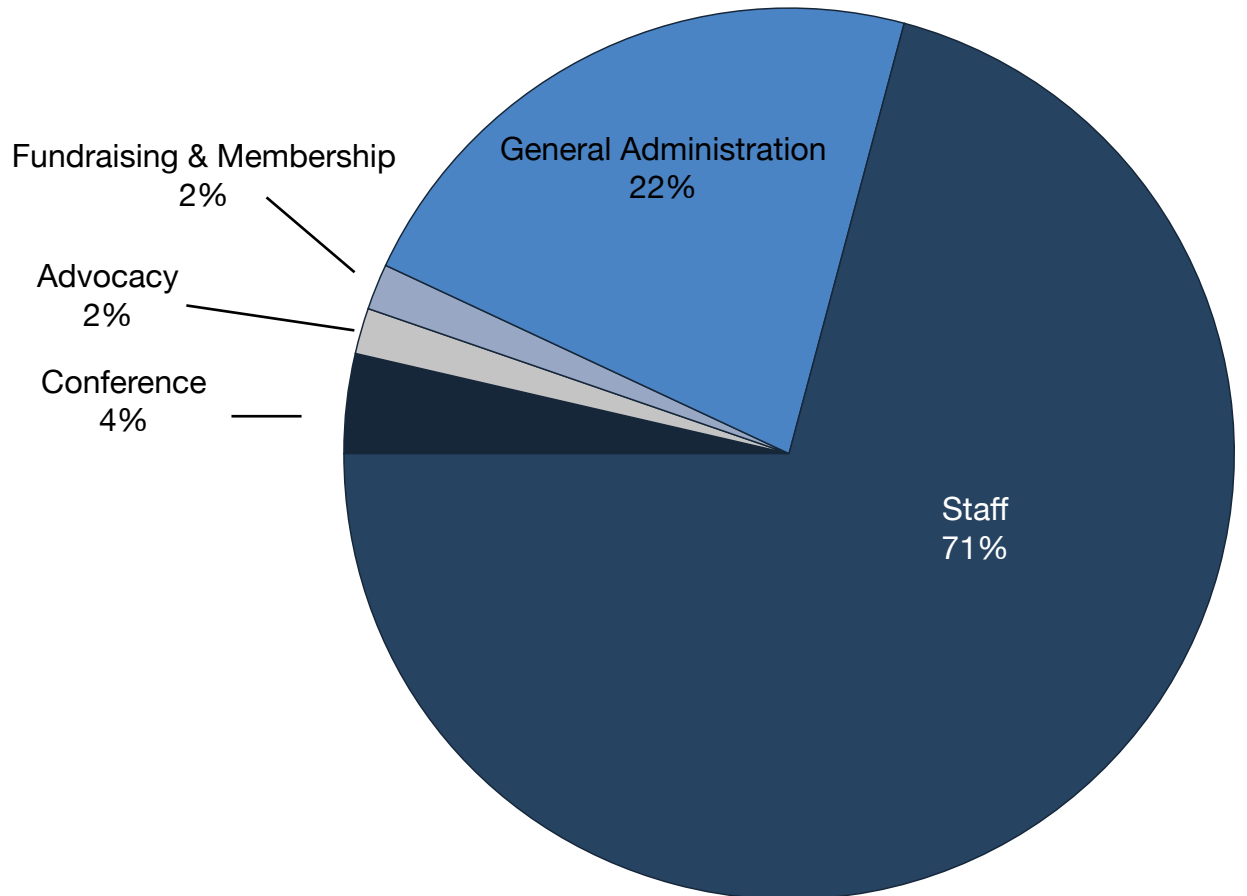
MARY PILLSBURY WAINWRIGHT & MARY PILLSBURY COMPANIES
Insite Consulting Architects, Inc. — Iron Star, Inc. — MarksNelson CPAs + Business Advisors —
Rosin Preservation — Blackline Design + Construction —
Wollenberg Building Conservation — Karen Bode Baxter, Preservation Specialist

2020 FINANCIAL INFORMATION

INCOME



EXPENSES



2020 MEMBERS AND SPONSORS

Missouri Humanities Council — Randy Schilling — Stark Wilson Duncan Architects, Inc. — TreanorHL — Karen Bode Baxter, Preservation Specialist — Rosin Preservation — Joplin Historical Neighborhoods, Inc. — Dalco Industries, Inc. — STRATA Architecture + Preservation — Deb Sheals, Building Preservation LLC — Michael & Julie Holley — Mary Pillsbury & Mary Pillsbury Companies — MarksNelson CPAs + Business Advisors — Penny Pitman, Iron Star Inc. — Carol Grove — Ann Holtshouser — Pishny Restoration Services — InSite Consulting Architects, Inc. — Dr. & Mrs. Thomas Hall, III — Howard & Sara Fleming — Jeff Brambila — Society of Architectural Historians St. Louis Chapter — Millennium Restoration & Development Corp. — Blackline Design + Construction

Wollenberg Building Conservation — Ken Aston — St. Louis Design Alliance — KC Elliot LLC — R.G. Ross Construction Company, Inc. — New Horizons Enterprises, LLC — GK Meyer Construction & Repair LLC — Dr. Frank Nickell — Piper Wind Architects — Mary Stiritz — Milton Rothschild — Peter Wollenberg — Janice & Bill Forsyth — Rhonda Chalfant — SFS Architecture, Inc. — RubinBrown — Restoration Saint Louis — Quaker Windows & Doors — P & F Properties LLC — Martha Chapo Family Gift Fund — Les Amis — KPFF Consulting Engineers — James G STaat Tuckpointing — Heartland Historic Homes — Engine House No. 1 — BSI Constructors, Inc. — Craig Milde — Stephen Arbo — William Piper — Ross Rotherham — Dr. Anne Carman

Julia Manglitz — Luncinda Baker — Ruth Keenoy — Carolee Hazlet — Esley Hamilton — Andrew & Kellie Trivers — Robert Price — Linda Pallman — Robert & Lura Koch — Pat Jones — Edna & Ted Gravenhorst — Thomas C. Grady — Mrs. Joseph F. Gleason — Shari Coplen — Kim Brown — Carter Brooksher — St. Joseph Convention & Visitors Bureau — Rosemann & Associates, PC — Preservation Resources, Inc. — Old Orchard Consulting — Neal Group Construction — J.L.S.K. Properties, LLC — HEH Investments, Inc. — Greenwing Development — Fendler & Associates — Dierberg Education Foundation — Clay County Historic Sites — AHR, LLC — Lucinda Rice-Petrie — Jim McCain — Karen Daniels — Dr. M. Elise Crain — Brick Autry — George & Charlotte Ronne — City of Joplin — City of Jackson — City of Kansas City — Walter & Marie Schmitz — Rachel Consolloy — Dr. Bonnie Stepenoff — Ryan Reed — W.M. Fronick — Eric Youngberg & Gary Krogh — Bradley Wolf — Robert Winters — Jaque Thummel — Tom Smith — Ray Simon & Mel Pashea — Frank Salter — Joe Ruebel — Tom Pickel — Rena Pedersen — Megan McGuire — Anne McDonnell — Mike & Becki McDaniel — James R. Mayo — Barbara Martin — Stephen & Marsha Limbaugh, Jr. — Lois Kruse — Tracy Kloss — Judith King — Day & Whitney Kerr — Katharine C. Hunvald — Jeffrey Huntington — Max Houser — Joe Holt — William C. Hoffman, Jr. — Paul Helmer — Nancy Hackett — Michael Griffin — Alexander Grab — Karen Goering — Bruce Galloway — Gerry Friedman

— Christy Franchot James — Stephen P. Ford — Anne Carson Foard — Frank Dvorak — John Carr — Mary Carpenter — E. Wardwell Buckner — Martha Bender — Scott Beck — Melissa & Scott Bean — Austin Barzanthy — Virescent Architecture + Design — South Side Spaces — Schmitz Management, LLC — red dot studio, inc. — Preservation Research Office — Northside Community Housing, Inc. — Museum Hill Neighborhood Association — Moberly Historic Preservation Commission — Martinez Tobin & Redman LLC — Marblelife of St. Louis — Hotel Indigo — Historic Lemp Brewery LLC — Hilliker Corporation — GastingerWalker& — Friends of Arrow Rock — Friedman Group Realtors & Housing & Community Solutions Collaborative, Inc. — Cullinan Properties — City of Lexington — City of Boonville — Buried Past Consulting, LLC — Artisan Restoration — A3G Architects — E. Wickliffe Utley — Linda Keown — Emily Wolpers — John W. McCullough — John H. Grizzell — Emily Frankoski — Jennifer Casati Zajicek — Michael Meinkoth — Jerome Schlichter — Howard & Penny Miller — Dr. Maryellen & Dr. Wiley McVicker — Timothy G. Conley — Douglas Aikin — Christopher Rowley — Linda & John Rootes — Dianna O'Brien — Sonya Morgan — Jeff Miller — Bert & Mary Ann Kellerman — Harold & Karen Karabell — John & Margaret Holland — Lloyd Guth, Jr. — Max Guenther — Kathy Greminger — Dave & Karen Fronick — Marise Compass — Larisa Cassell — Gena Bast — Village of Arrow Rock — Oakland Historic Preservation Commission — City of Wildwood — City of Webb City — City of Pacific — City of Excelsior Springs — City of Cottleville — City of Cape Girardeau — City of Blue Springs — Roman Buddemeyer — Robert L. Walters — Catherine Parke — Helen Hunter — Clyde Weeks — John Vietmeier — Drew Tedlock — Alice J. Strange — Jill Straatmann — Mark Stauter — Kathy Shaffstall — Brenda Schloss — Tracy Rogers — Jodi Roberts — Susan Rehkopf — Jo Ann Radetic — Christiane Quinn — Nancy Powell — Mary Anne Phillips — Virginia Pankey — Robert J. Mueller — Richard Mueller — Amanda Moore — John McCarthy — Janice Matthews — Randolph Maness — Rene Malden — Sarah Lindsey-Lutz — Joanne Leonard — Michael Kohn — Kevin Kelleher — John A. Karel — Nancy Jones — Kelly Johnston — Nancy James — Edward C. James — Becky Imhauser — Barbara Huddleston — Antonio F. Holland — Steven Hoffman — Trevor Harris — Greg & Melissa Hagen — Patricia Gunby — Dana Gould — Ross Freese — John S. Fick — Joe Edwards — Cynthia Easterling — Laura Jean Derrick — Dottie Dallmeyer — Ginny Booker — Catherine Bauer — David Atkinson — Well-Preserved — Post Art Library — Old Town Cape, Inc. — MR Capital Advisors LLC — Missouri Historical Society Library & Research Center — Michael Alan Thomas, Architect — Main Street Chillicothe — Laura Ingalls Wilder Home & Museum — Kellerman Foundation — Historic Florissant, Inc. — Historic Bethel German Colony, Inc. — Foundation for the Restoration of Ste. Genevieve — Field House Museum — Campbell House Museum — Shirley Wolverson — Jan Simons — Mike Holley — Chet Breitweiser — James Falls — Jan Bentley — Devra Wheeler — John M. Robinson, III — JoAnn Peters — Gail Emrie — Danene Brooks — Ann Stanley — Anna Ives — Michael Hamburg — Patricia Fowler — Kenny Hulshof — Angela Price — Ruth Lee — Kevin Harden — Jessica de Pilar — Christina Clagett — Frederick H. Atwood, III



**MISSOURI
PRESERVATION**

Preserving Place And Community For Future Generations

319 North 4th Street, Room 850
St. Louis, Missouri 63102